



# RICE WEST NILE

Striving for Self Reliance

# 2021 ANNUAL REPORT



**© Rural Initiative for Community Empowerment West Nile (RICE West Nile)**  
**Plot 3B Mvara-Oluko Road**  
**Arua City - Uganda**  
**Contact: [jambo@ricewestnile.org](mailto:jambo@ricewestnile.org) | [ricewestnilem@gmail.com](mailto:ricewestnilem@gmail.com)**  
**Website: [www.ricewestnile.org](http://www.ricewestnile.org)**

**Published by Rural Initiative for Community Development West Nile (RICE West Nile)**  
**Communications Department**



## **TABLE OF CONTENT**

Abbreviations and Acronyms	2
Who we are	3
Executive Summary	4
2021 Key Achievements Snapshots	5
2021 Achievements by the Strategic Aim	8
Protection and Preservation of Nature	9
Environment Protection	10
Household Resilience and Wellbeing	11
Sustainable Agriculture	13
Education and Skills Development	15
Peaceful Coexistence	17
Community Health	19
Leading Sustainably	20
2021 Finance Burnrates	22
Challenges and Recommendations	23
Gallery	24

# ABBREVIATIONS AND ACRONYMS

<b>AIDS</b>	<b>Acquired Immunodeficiency Syndrome</b>
<b>AJWS</b>	<b>American Jewish World Service</b>
<b>BOD</b>	<b>Board of Directors</b>
<b>CARE</b>	<b>Cooperative for Assistance and Relief Everywhere</b>
<b>CBFs</b>	<b>Community Based Facilitators</b>
<b>CBOs</b>	<b>Community Based Organizations</b>
<b>CDDP</b>	<b>Community Drug Distribution Point</b>
<b>CHASE</b>	<b>Community Health and Sustainable Environment</b>
<b>CHVs</b>	<b>Community Health Volunteers</b>
<b>CMSGs</b>	<b>Community Managed Savings Groups</b>
<b>COVID-19</b>	<b>Corona Virus Disease</b>
<b>CSO</b>	<b>Civil Society Organization</b>
<b>Demo</b>	<b>Demonstration</b>
<b>ECCE</b>	<b>Early Childhood Care and Education</b>
<b>ERI</b>	<b>Enabling Rural Innovation</b>
<b>FGHR</b>	<b>Fund for Global Human Rights</b>
<b>FM</b>	<b>Frequency Modulation</b>
<b>FP</b>	<b>Family Planning</b>
<b>GBV</b>	<b>Gender Based Violence</b>
<b>HIV</b>	<b>Human Immunodeficiency Virus</b>
<b>ICS</b>	<b>Improved Cook Stoves</b>
<b>IDI</b>	<b>Infectious Disease Institute</b>
<b>IGA</b>	<b>Income Generation Activities</b>
<b>IGA</b>	<b>Income Generating Activities</b>
<b>KP</b>	<b>Key Population</b>
<b>LC</b>	<b>Local Council</b>
<b>MCC</b>	<b>Mennonite Central Committee</b>
<b>NANEP</b>	<b>Northern Albertine Network on Environment and Petroleum</b>
<b>NGO</b>	<b>Non-Governmental Organization</b>
<b>NWSC</b>	<b>National Water Sewerage Cooperation</b>
<b>OPM</b>	<b>Office of the Prime Minister</b>
<b>PLHIV</b>	<b>People Living with HIV</b>
<b>PSN</b>	<b>Persons with Special Needs</b>
<b>PSS</b>	<b>Psychosocial Support Services</b>
<b>RETs</b>	<b>Renewable Energy Technologies</b>
<b>RICE West Nile</b>	<b>Rural Initiative for Community Empowerment West Nile</b>
<b>SDCs</b>	<b>Savings Development Clusters</b>
<b>SHS</b>	<b>Solar Home System</b>
<b>STRENPO gram</b>	<b>Strengthening Resilience and Promoting Inclusive Governance Pro- gram</b>
<b>TB</b>	<b>Tuberculosis</b>
<b>ToTs</b>	<b>Trainer of Trainees</b>
<b>TVET</b>	<b>Technical and Vocational Education and Training</b>
<b>VSLA</b>	<b>Village Savings and Loans Association</b>
<b>WWF-UCO</b>	<b>World Wide Fund for Nature - Uganda Country Office</b>



# WHO WE ARE

Starting from humble beginning in 2004, Rural Initiative for Community Empowerment (RICE West Nile) has grown to acquire the status of a national Non-Governmental Organization (NGO) with a mandate to operate in any part of Uganda. Currently, RICE West Nile operates in Arua City and 10 districts of West Nile including Pakwach, Nebbi, Madi-Okollo, Arua, Terego, Maracha, Koboko, Moyo, Obongi and Adjumani.

RICE West Nile headquarters and Arua branch are located in Arua city while Moyo branch office is in Moyo town with staff capacity of 56 staff (Male 31 Female 25).

## Mission

To Kindle and facilitate a people led and sustained protection of nature and wellbeing of humanity

## Vision

A self-reliant, sustainable and holistically transformed society

## Core Values

- Simplicity
- Team spirit
- Equity
- Novelty
- Safeguarding
- Transparency and accountability

## Strategic Focus

- Protection and prevention of nature
- Household resilience and wellbeing
- Leading sustainably

# EXECUTIVE SUMMARY



In 2021 RICE West Nile implemented 12 projects funded by a range of donors missioning to kindle and facilitate a people led and sustained protection of nature and wellbeing of humanity through the strategic focus area mentioned above.

RICE West Nile worked hand in hand with other key stakeholders and dedicated staff and we were able to reach and serve 410 farmer groups who were supported to establish 325 demo gardens, 3 community tree nursery sites that raised more than 19,000 tree seedlings while 552 (250F, 302M) farmers from the groups were facilitated in exposure visits. 88,972 tree seedlings were distributed and planted, 660 adolescents youths (240M, 420F) were enrolled in 22 BONGA Centers while 423 boys and 522 girls were enrolled to 3 ECCE Centres, 125 boys and girls received scholastic materials for schooling, 8,261 men and women received free basic health care and family planning services during 24 mobile clinics.

Finally, this page is merely a tip of the iceberg, meaning you have every reason to proceed and appreciate the great work done by opening and critically reading through the next pages that provides a summary of RICE West Nile projects and some organizational activities over the past 12 months including achievements organized under the core program areas, some challenges, lessons learnt and finances at a glance. We count on your honest feedback which we believe will make us better in the subsequent years.

Yours in service

A handwritten signature in black ink, appearing to read 'Pax Sakari'.

Pax Sakari Executive

Director Executive Summary

# 2021 Key Achievements Snapshot

## 552

Farmers from 272 groups facilitated for exposure visits



● 302 Male  
● 250 Female

## 405

Community groups **EMPOWERED** in VSLA methodology

## 306

Community groups **EMPOWERED** in ERI and best agronomic practices



## 326

Demo gardens **ESTABLISHED**

## 150

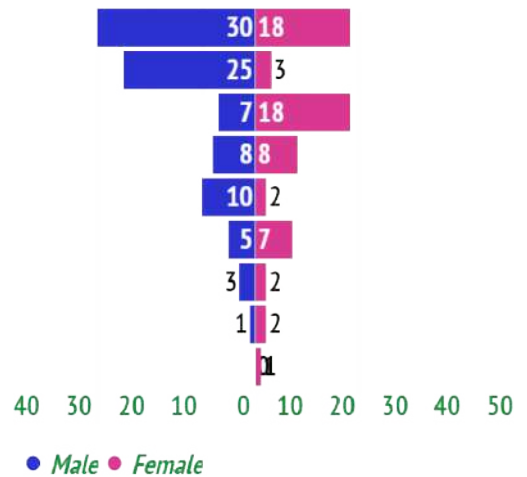
Community Volunteers

Host 67.36% Refugee 32.64%



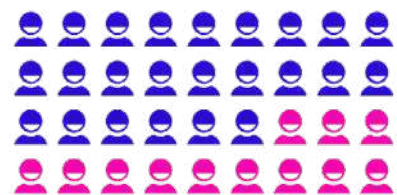
NATIONALITY

- Village Agents
- Community Health...
- Animators
- Community Peace...
- Linkage Referral...
- Care givers
- Community Based Trainer
- Community Based...
- Linkage assistant



## 272

persons trained on conflict mitigations and management



● 180 Male ● 92 Female

## 6

BABA groups and

## 5

parenting clubs established



● 150 Male ● 180 Female

## 2021 KEY ACHIEVEMENTS SNAPSHOT



96

Backpacks distributed to 96 Community Volunteers



48

Smart phones procured and distributed to 48 Village Agents.



90

Bicycles procured and distributed to 90 Community Volunteers



48

Umbrellas procured and distributed to 48 community volunteers



145

Tarpaulins distributed



222

Flip charts distributed



28

Community learning centers established.



88,972

Trees planted.



15

School dropout girls and boys **ENROLLED** for vocational education.



3

Value chains developed.



31

Community outreaches conducted on GBV, Environment etc.



10

Start up kits distributed i.e. sewing machines



15

Enterprises established.



12

Radio dialogues conducted on topical issues affecting both refugees and host communities in relation to COVID-19.

660

Adolescents and

122

Youths attached to local artisans for IGA

trainings.



8,043

Liters of Liquid Soap distributed to community members



1,214

Face Masks distributed to community members

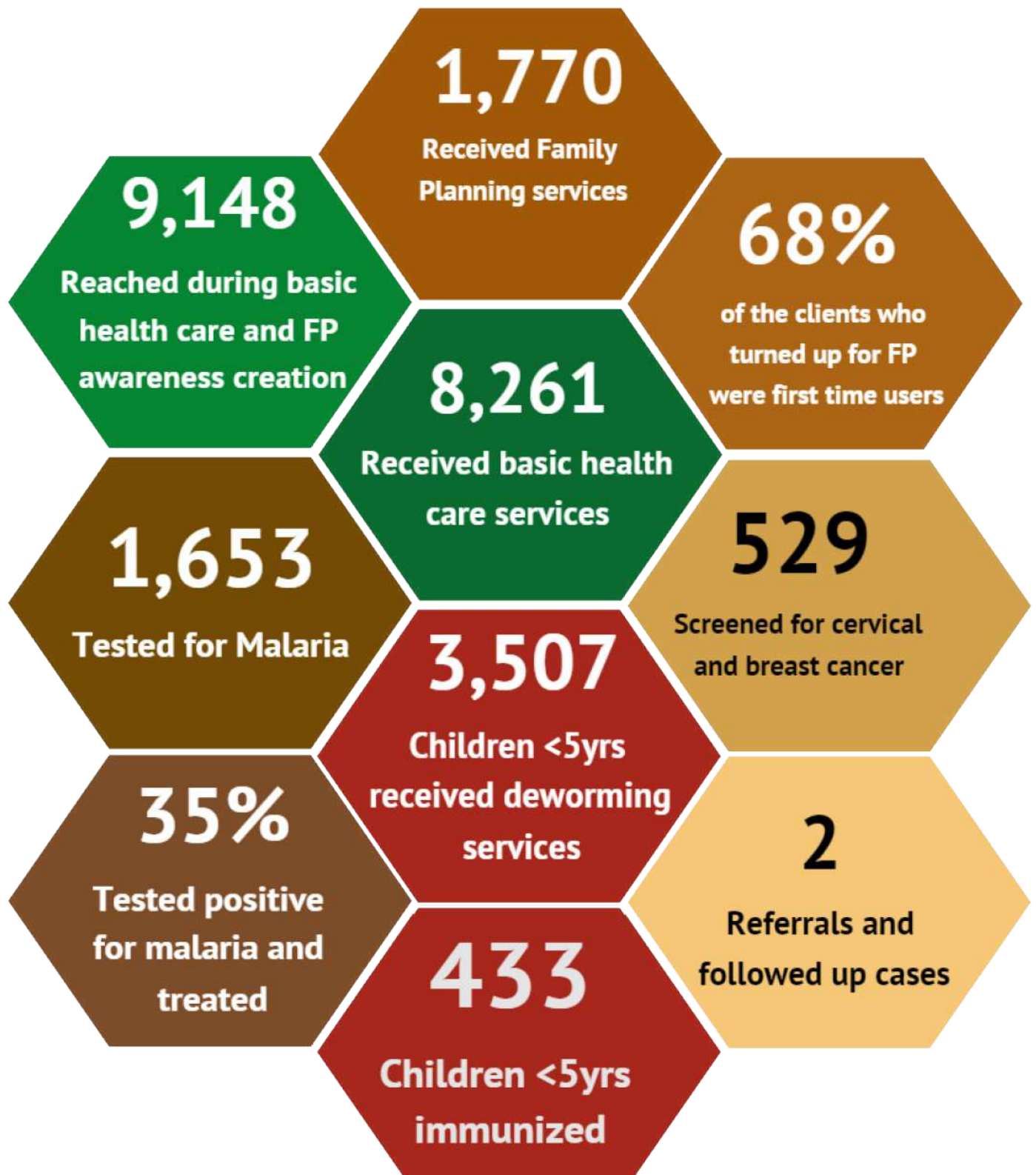


133.64

Liters of Hand Sanitizer distributed to community members



▲ 2021 KEY ACHIEVEMENTS SNAPSHOT





## 2021 ACHIEVEMENTS BY STRATEGIC AIM

### Strategic Goal and Aims in the strategic period 2020-2024

**Goal:** To contribute towards household and community resilience against shocks and stresses resulting from natural and manmade calamities and wellbeing of targeted populations (including refugee and non-refugee communities) in a sustainable manner.

→ **Strategic Aim 1:** Protection and preservation of nature.

Strategic Objective: To conserve the ecosystem and promote sustainable use of natural resources among 250,000 highly vulnerable refugees, the host community and non-refugee communities in the operational areas.

→ **Strategic Aim 2:** Household resilience and wellbeing.

Strategic objective: To improve community resilience and capacity to generate income and sustainably support their wellbeing by 2024.

→ **Strategic Aim 3:** Leading sustainably.

Strategic Objective: To demonstrate efficient and effective organizational governance and leadership through exceptional governance, a positive working environment and financial sustainability.





## PROTECTION AND PRESERVATION OF NATURE

**Strategic Objective:** To conserve the ecosystem and promote sustainable use of natural resources among 250,000 highly vulnerable refugees, the host community and non-refugee communities in the operational areas.

### Strategic out puts

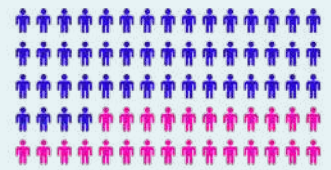
1. Integrated natural resources management and sustainable incomes promoted and harnessed among 75,000 households and institutions.
2. 25,000 Renewable Energy Technologies (RETs) distributed and consumption of these technologies increased at households and institutions.
3. 7,500 Communities and stakeholders educated on existing legal and policy documents on natural resources.
4. All districts in operational areas lobbied to increase budget allocation on conservation and natural resource.

## ⇒ ENVIRONMENTAL PROTECTION

### ↳ Community dialogues on climate resilience and natural resources

3 community dialogues on climate resilience and natural resources was conducted in Kubala market Omugo Sub County. The dialogue was recorded and aired on Arua One FM to increase the audience outreach. Topics covered included poor waste management in Kubala market i.e. lack of rubbish bins, the filled up of sanitary facilities in the market and contamination of air by the toilets. The leaders committed to address the issues immediately by emptying the current rubbish pit as they incorporate the purchase of another land for rubbish pit in the sub county development plan. LCIII chairman also educated the communities about NWSC piping water to run in the subcounty.

**143** Community members participated in the radio dialogues



● 93 Male ● 50 Female

Leaders committed to address the issues immediately by emptying the current rubbish pit as they incorporate the purchase of another land for rubbish pit in the sub county development plan. LCIII chairman also educated the communities about NWSC piping water to run in the subcounty.

### ↳ Diversified livelihood for plastic waste recycling youth group

3 youth groups who were initially engaged in plastic waste recycling management in 2020 were trained on making energy saving stoves and later provided with startup kits. Following their training, they put into practice the knowledge gained; In total the 3 youth groups from Uriama Sub-county sold 22 improved cookstoves. In total the groups constructed 28 stoves and 22 were sold at Ugx 15,000.

### ↳ Building CBO's skills and knowledge on nursery bed operations and management

Capacity of 3 CBOs was build on nursery bed operations and management. This aimed at enabling the communities to regenerate the environment and protect natural resources through agro-forestry or tree planting in the community.

### ↳ Establishment of community managed tree nurseries

3 groups were supported to establish and manage tree nurseries with variety of seedlings. This aimed at ensuring access and availability of tree seedlings to improve the tree/forest addressing the increase in deforestation and conflicts over wood fuel among refugees and host communities during the Community Adaptive Action Plans (CAAPs) in 2019. The groups were also oriented on farmer managed natural regeneration approach to reduce on tree cutting. The groups raised a Variety of tree seedling including 4800 Mahogany, 3000 Teak, 5000 Paw Paw.



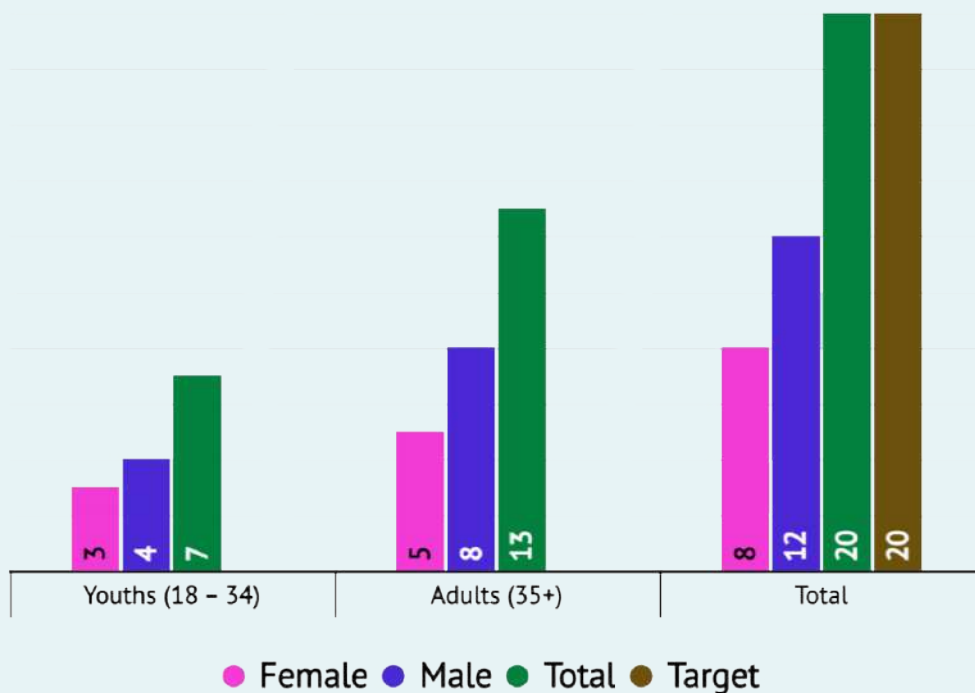
### ↳ Distribution and planting of tree seedlings

88, 972 tree seedlings distributed and planted in Terego, Obongi and Adjumani districts. 18% of the total tree seedlings distributed were raised by 3 community groups included which were planted at wetland areas, agro-forests and institutions.



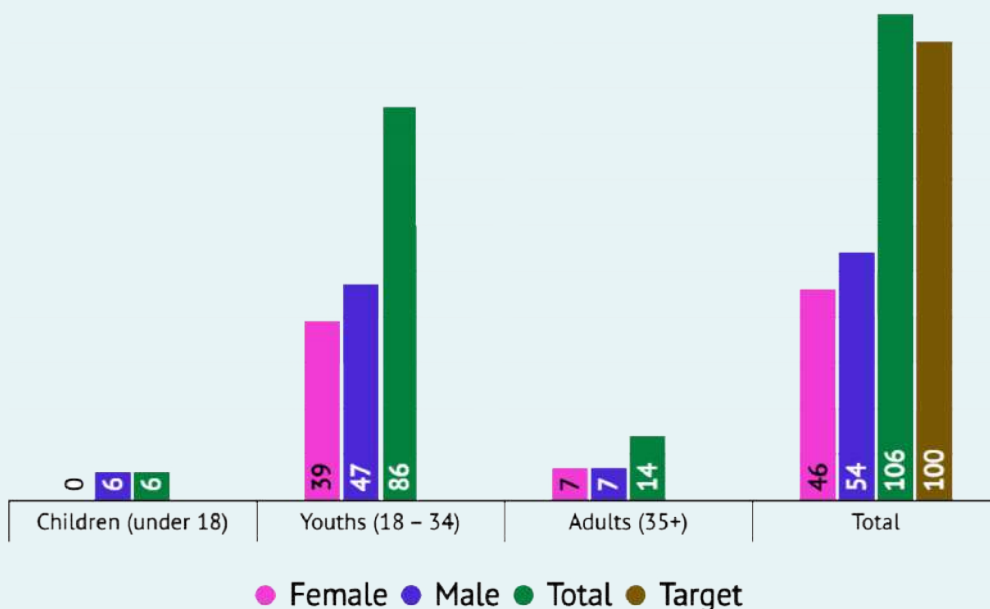
## ↳ Empowering key stakeholders on Environmental and Social Impact Assessment (ESIA) processes.

20 key stakeholders i.e. district environment officers, CSOs, and media trained on ESIA processes to aid monitoring of compliance from Nwoya, Pakwach, Madi Okollo, and Obongi. ESIA process is a key tool for sustainable management of development projects such as oil and gas among others.



## ↳ Community awareness creation on Free Prior and Informed Consent (FPIC)

4 awareness creation exercises conducted on the principles of FPIC in the districts of Nwoya, Pakwach and Yumbe. FPIC is a measure that is recognized as not just an obligation, but also as an effective way to safeguard environment, and communities' rights. The activity was aimed at promoting FPIC knowledge and empowering these communities to hold their leaders and companies accountable to limiting negative impacts of oil and gas on environment and community.





## HOUSEHOLD RESILIENCE AND WELLBEING

**Objective:** To improve community resilience and capacity to generate income and sustainably support their wellbeing by 2024.

### Strategic Outputs

1. Five (5) agricultural value chain developed and promoted among households.
2. Learning, skills, business and enterprise developed among 1,000 persons aged 4-35 years in an inclusive manner.
3. WASH and health accessed among 75,000 underserved and inaccessible communities' population in our areas of operation.
4. Peaceful coexistence enhanced among 50,000 refugees and host communities and non-refugee communities.



## ⇒ SUSTAINABLE AGRICULTURE AND LIVELIHOOD

### ↳ **Empowered Community Based Organizations (CBOs) and Saving Development Clusters (SDCs) using Enabling Rural Innovation (ERI) approach.**

306 CBOs and SDCs, 48 (30M, 18F) village agents, 9 (6M, 3F) project staff and 3 (2M, 1F) Sub County staff were trained in sustainable agricultural production using ERI approach including sustainable agricultural practices and Agronomy of selected crops; basic food security and nutrition; basic food preservation and post-harvest handling; vegetable garden establishment and mulching organic agriculture.

The groups were also strengthened to develop both farming and off farm enterprises to meet market needs in sustainable agriculture and conduct cost benefit analysis.

This has increased the adaption of good and modern agronomic practices that includes raw planting, timely and proper weeding, mulching, timely application of fertilizers, pesticides which was not the practice among the community before the project.

The group members have learnt the practice of setting individual and goals goals that has motivated them to be focused on their economic empowerment development. Social cohesion among host and refugees SDCs has been enhanced through the group demo activities.

### ↳ **Development of sustainable enterprises.**

15 enterprises were developed by 266 SDCs in Obongi and Moyo districts. The SDCs were supplied with certified seed, farm tools and extension services provided by village agents to establish the enterprises included beans, groundnuts, maize, e.t.c.

### ↳ **Establishment of group demonstration gardens.**

326 groups were supported to establish demo sites for high value crops such as onions, okra, simsim, casava, maize, beans, watermelon, cabbage, soyabeans, tomatoes, cowpeas, green peper, rice, sunflower, sorghum, ground nuts and hibiscus in the refugee and host communities for income generation and economic empowerment as well as promoting social cohesion.

### ↳ **Supported refugee groups to access farm land from the host community.**

1 land agreement document was developed in partnership with host and refugee community leaders and Office of the Prime Minister (OPM) to enable proper documentation of land



*Farmers learning the modern and good agronomic practises from a demonstration garden.*



*One of the demo gardens in Moyo Subcounty*

acquisition for persons of concern. This has not only enabled the refugee to access land for farming it has also enhanced peaceful coexistence between host and the refugees.

↳ **Promoted sustainable value chains.**

RICE West Nile procured and installed 2 grinding and 1 winery machines that is currently managed by 3 community groups to boost their incomes and reduce conflicts caused by congestion at grinding places.

↳ **Farming techniques and access to farm tools improved**

333 community groups received certified assorted seeds and farm tools to enable them undertake farming for food security and income generation. The groups were received certified seeds, fungicides, pesticides, fertilizers, watering cans, hoes, pangas and spray pumps among others.

↳ **Facilitate small initiatives led by women and youth for social cohesion**

RICE West Nile supported 13 small initiative groups to establish small income generating activities. These groups were identified through competitive process and were guided to develop ideas that lead to social cohesion and economic stimulation. 8 groups out of the 13 groups were received certified assorted seeds and farm tools to enable them undertake farming for food security and income generation.



*RICE West Nile distributed farm inputs to 330 farming groups of West Nile Region*

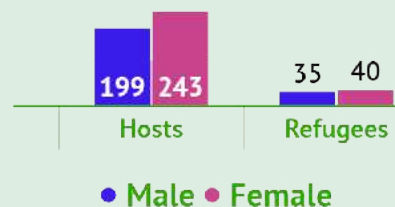
↳ **Community resilience exhibition and exposure visits**

In this reporting period, RICE West Nile facilitated a total of 552 (250 F, 302M) members from 272 farmer groups to participate in community resilience exhibition and exposure visits.

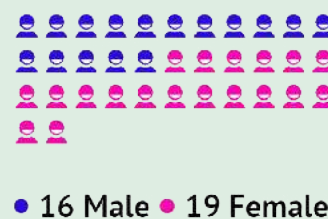
The two days was organized by development partners, OPM and UNHCR in Rhino Camp Refugee Settlement to showcase resilience innovations created by refugees and host communities in the settlement. The six RICE West Nile groups exhibited a line of products in their value chains such as Hibiscus (powder, juice & wine), cassava (chips, flour, snacks made of cassava), groundnuts (paste, toasted, oil), pavers recycled from plastic waste, energy saving cookstoves made by refugee youths, organic pesticides and organic manure among others.

While the 517 (283F, 234M) were taken to Abi Zadri Farm Arua for an exposure visit. The members received education on the various selected enterprises.

**517**  
Farmers from 266 SDCs facilitated for exposure visits at Abi Zadri Farm Arua



**35**  
Farmers from 6 CBOs facilitated for an exhibition visit in Rhino Camp Refugee Settlement




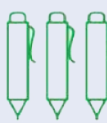


## ⇒ EDUCATION AND SKILLS DEVELOPMENT

### ↳ **Retention in secondary and vocational schools for children and youth from vulnerable households in Imvepi refugee settlement and the host communities.**

Despite the COVID-19 challenges, RICE West Nile registered 98% retention among the beneficiaries in secondary school and 100% retention in the vocational school. COVID-19 Personal Protective Equipments (PPEs), scholastic materials and training materials were procured and distributed to the students.

 **131**  
Dozens **A4 Exercise Books** distributed to students.

 **15**  
Boxes of **Pens** distributed to students.

 **131**  
Cartons of **Photo Copying Papers** distributed to students.

 **20**  
Dozens of **Pencils** distributed to students.

### ↳ **Increased access to quality secondary and vocational education for students.**

1,076 (607F, 469M) students supported in home based learning during the school lockdown as one of the measures to control the spread of COVID 19. This was achieved by duplicating and distributing more than 544 copies of learning materials from Ministry of Education.



*S.6 stutents during a study sessions in Otumbari Secondary Terego Subcounty*

### ↳ **Facilitate teachers to support students in secondary during schools lockdown.**

30 teachers facilitated with meals

and transport to support 131 (85F, 46M) students in a cluster of 5 persons per group to enhance their learning during the lockdown period.

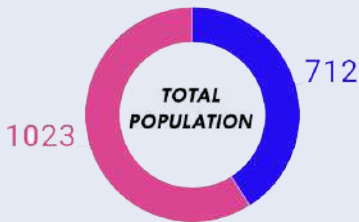
The group discussions took place on daily basis and the teachers of the various subjects met the groups during their discussion sessions to offer support and clarity in areas of need.

### ↳ **Establishment of learning centers**

The 3 ECCE Centers were further divided into 12 community-based learning centers and attached to the main centers. This has resulted in increased demand by refugee parents to enroll their children in the available ECCE centres: There was also a need to comply with COVID-19 SOPs by the Ministry of Health hence two learning sessions were conducted per day with 15 children per session.

# 28

Learning centers established with a population of 1,725 rights holders



# 22

BONGA Centres with 660 ADOLESCENTS enrolled



# 3

ECCE Centres with 945 CHILDREN enrolled



# 3

TVET Centers with 120 YOUTHS enrolled



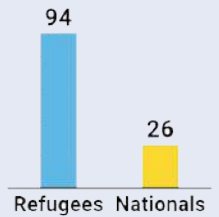
48 Male



72 Female



1 PWD



### ↪ IGA training conducted for 660 Adolescents and 120 youths

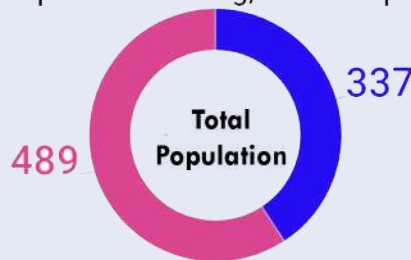
18 local artisans were profiled and contracted to train 660 (420F, 240M) adolescents and 120 (72F, 48M) youths in various trade interests. The trades selected included tailoring, hair dressing, phone repair and maintenance, motorcycle repair and maintenance, bakery among others.

### ↪ Conducted Life Skill sessions

This was mainly undertaken at BONGA, TVET centres and schools covering all the ten life skills sessions. This was intentionally conducted to prepare the youths and adolescents before enrolling them for IGA and vocational training. Continued behavioral changes among the youths attending life skills sessions was observed. Overall, the youths continue to be appreciative of the program. Raya Zainab, the Chairperson of the TST at Gborokonyo TVET center said; "I request that this program should continue in the community and the center shouldn't be closed even next year."

# 846

Community members trained on 10 Life skill i.e. personal hygiene, problem solving, leadership etc.



# 660

ADOLESCENTS trained from 22 BONGA Centers



# 120

YOUTHS trained from 3 TVET Centers



# 66

STUDENTS trained





## ⇒ PEACEFUL COEXISTENCE

### ↳ **Community radio dialogues on conflict sensitive issues between host and refugee communities**

In the reporting period RICE West Nile conducted 12 radio dialogues on conflict triggers affecting refugees and host communities in relation to COVID-19 and peaceful coexistence.

The dialogues were conducted in partnership with OPM, key stakeholders (implementing partners etc.), refugee and host community leaders to address issues among refugees and between refugee and host community.

The talk shows focused on topical issues such as rumors/misconceptions and stigma associated with COVID-19, conflicts in the education sector associated with COVID-19, high rate of deforestation, high rate of drug abuse and increasing cases of GBV in Plaorinya Refugee Settlement.

This has increased Social Cohesion among refugees and between refugees and host communities with 83% positive response from the monitoring visits.



*Panelis during a radio dialogues to address issues related to conflict and increased GBV cases on Radion Amani in Adjumani District.*

### ↳ **Broadcast of peaceful radio programs**

3 radio programs on peaceful coexistence were broadcasted for one month at communal points such as markets, water points, etc in Palorinya Refugee Settlement and the host communities by 8 hired Boda Boda men (4 from host and 4 from the refugee community). The episodes were recorded in local languages of Madi, Barri, Kakwa, Dinka, Arabic, Nuer and English. The programs broadcasted included:

- i. 18 episodes of Public System Announcements (PSAs)
- ii. 8 themes of Boda Boda man drama series
- iii. 22 episodes of Lugara Shabab.



*A Boda Boda man boardcasting the radio prgrams on peaceful building in Palorinya Refugee Settlement and host community.*

### ↳ **Production and dissemination of Information Education Communication (IEC) materials**

2000 IEC materials were produced and disseminated on key aspects of the laws, policies and proce-

dures for conflict resolution.

### ↳ Psychosocial Support Services for conflict affected clients

Conducted psychosocial support training for 12 ECCE care givers, 3 TVET Animators, 3 CBFs and 22 Bonga Animators.

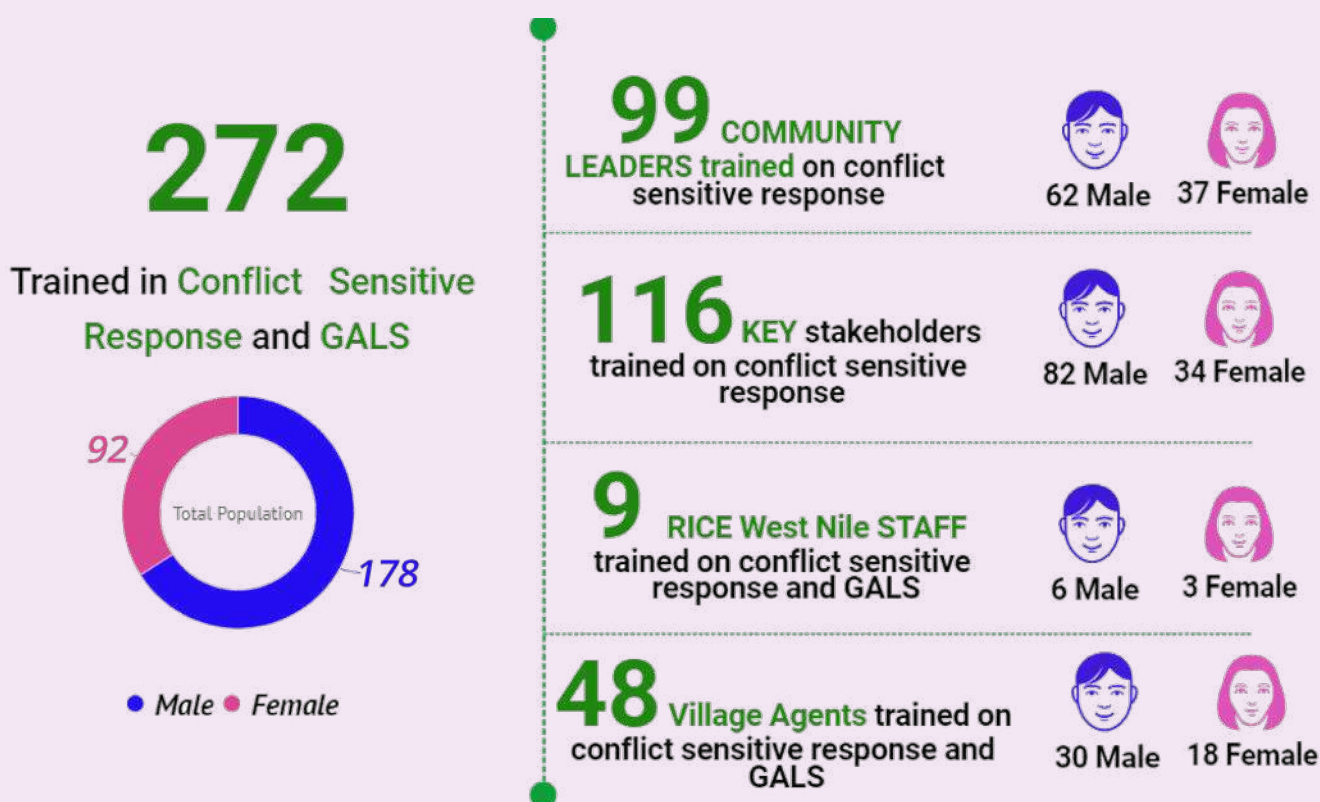
Psychosocial support sessions for conflict survivors in Bonga centers, and ECCE centers were organised.

Routine counselling and follow ups for 26 clients was also conducted (11 male, 15 female, 6 PWDs (4 female, 2 male).

### ↳ Capacity enhancement on conflict sensitive response and Gender Action Learning System (GALS)

Trained 270 persons (178F, 92M) including key stakeholders, local leaders, community peace monitors, cultural leaders, religious leaders and opinion leaders from refugee and host community on conflict sensitive response, peace building, conflict mitigation and management.

58 (36F, 22M) of the total number reached were trained on GALS.





## ⇒ COMMUNITY HEALTH

### ↳ **Increasing awareness on basic health care and benefits of family planning**

#### → **Community Meetings**

12 community information meetings were conducted targeting women leaders, men and Youth in addition to elders, faith leaders, business representatives, government leaders and health personnel to discuss the myths and importance of Family Planning (FP). The meeting equipped the targeted population with accurate information to educate and mobilize their community members to embrace FP services.

9148 community members (5,430 F, 3,718M) were reached with family planning awareness through the community meeting.

#### → **Radio Talk Shows on family planing and basic health care.**

Two (2) radio talk shows were conducted on radio Pacis and Pakwach frequency modulation (FM) on dispelling the myths about the modern contraceptives and increasing awareness about the benefits of parenthood.

### ↳ **Increasing the uptake of voluntary, free, quality contraceptives for women and men of reproductive age**

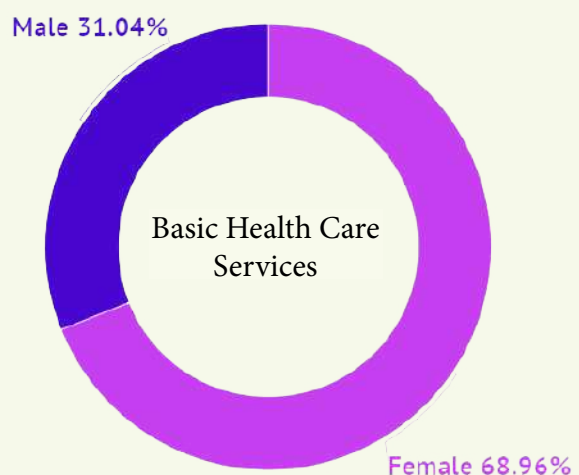
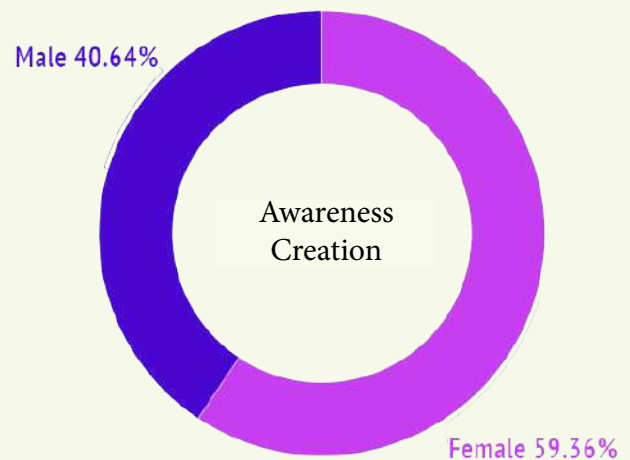
#### → **Human Resource capacity building**

40 (32M,8F) Community Health Volunteers (CHVs) (20 from Pakwach and 20 from Madi Okollo districts were recruited and trained on the following

- i. Importance of family planning
- ii. How to address the myths on FP
- iii. Their roles during mobile day clinics.

#### → **Mobile Day Clinics**

24 mobile day clinics were conducted in fishing communities of Madi-Okollo and Pakwach districts reaching a total of 8,261 clients (5697F, 2564M) for both family planning and basic healthcare services with 22% of the clients receiving family planning services.





## LEADING SUSTAINABLY

**Objective:** To demonstrate efficient and effective organizational governance and leadership through exceptional governance, a positive working environment and financial sustainability.

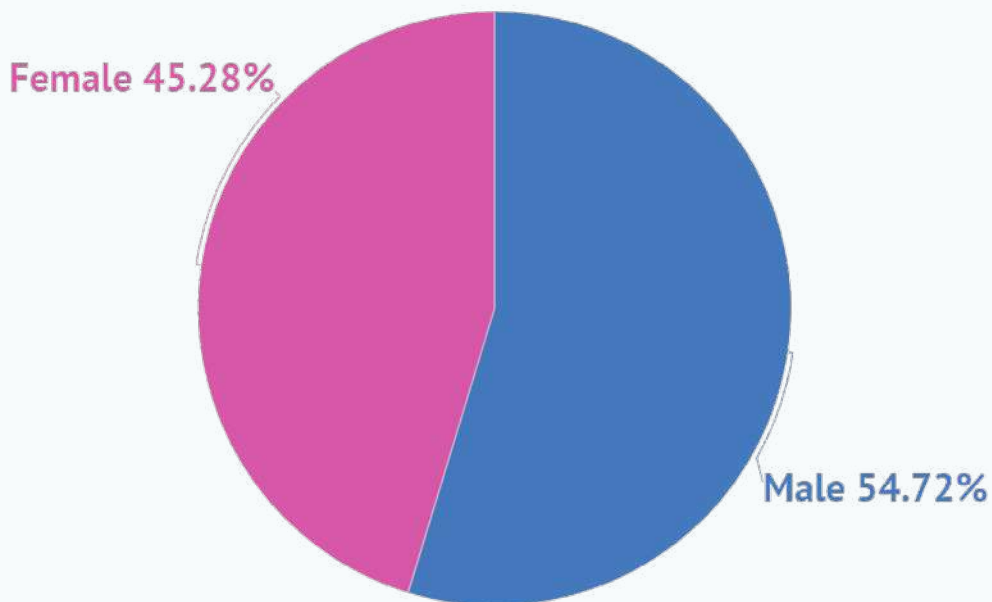
### Strategic Outputs

1. Board governance plans developed and distinctive scores on Board performance.
2. Staff score average of 70 percent on performance.
3. Achieve high exception on internal and external assessment of operations and audits.
4. Yearly incremental funding realized.
5. 40 percent of administrative/operational budget supported by locally generated resources.

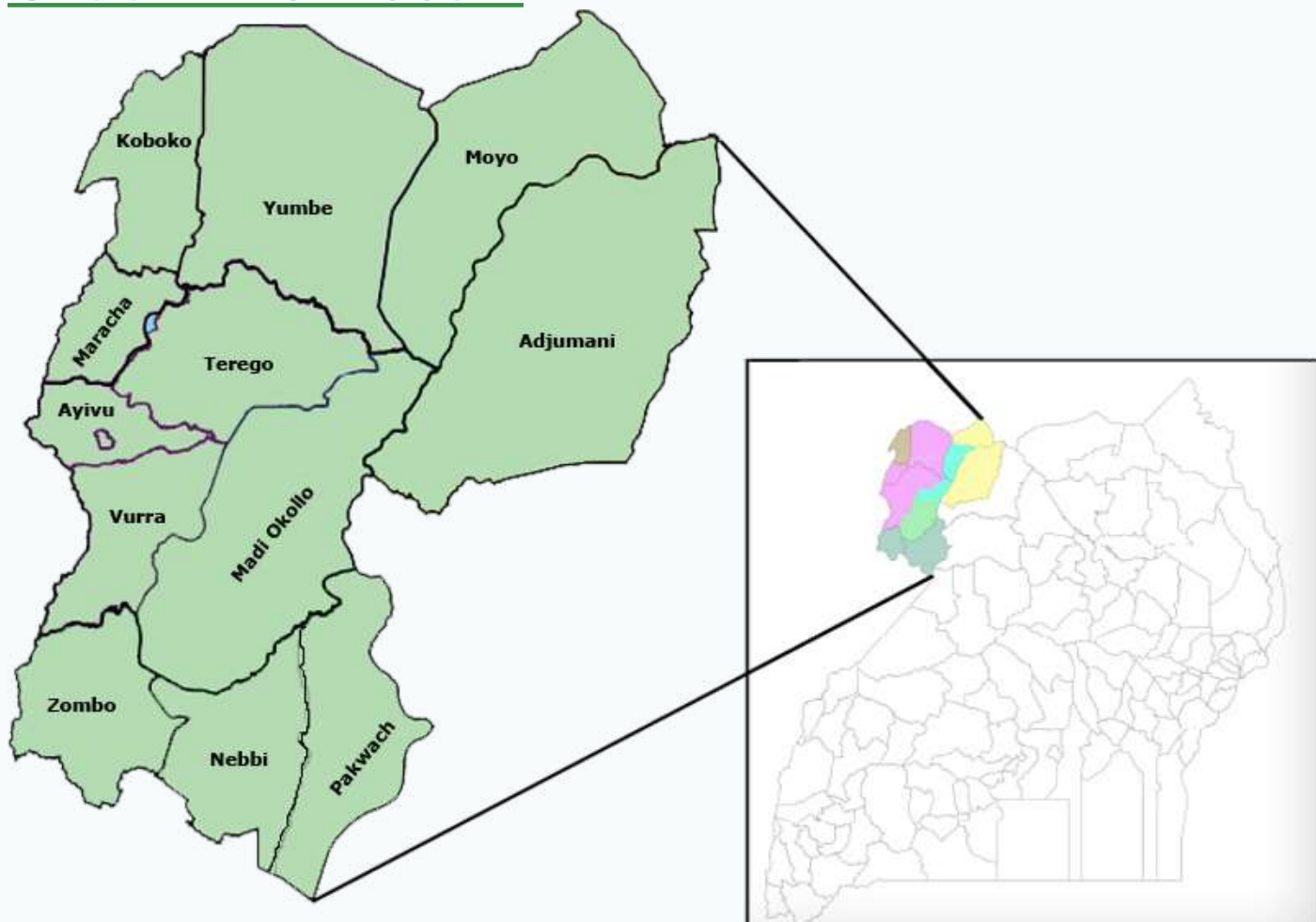
# 2021 UPDATES

Theme of the year  
“Making RICE West Nile shine against all odds.”

## Staff 2021

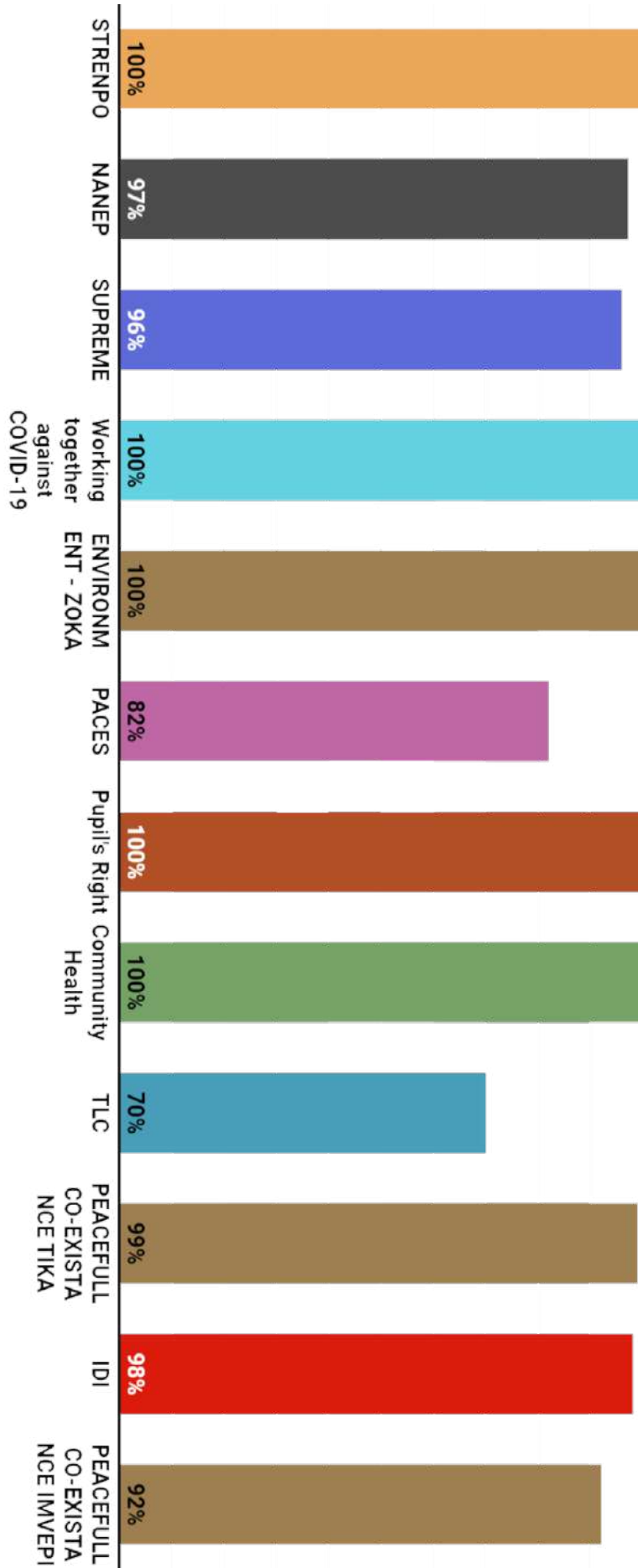


## GEOGRAPHICAL SCOPE





# 2021 FINANCE BUNRATES



## CHALLENGES AND WAY FORWARD

- Language barrier among the refugees and between the host and the refugees made it difficult for the refugees from Congo to interact with the hosts and hence caused delays in identifying land for hiring from the hosts and conducting efficient activities with the refugees. This also affected the accuracy of information translated and also consumed more time.
  - There is need to link/mix the refugee groups with the host groups for easy access to land for the refugee groups and peaceful coexistence.
- Long period of drought from April to June affected the farmers for example most of the cassava stocks supplied dried and only few remained viable. Maize seeds were not planted due to lack of rains.
  - The farmers were encourage to practise water consevation practises and plant short term crops. It is also important to introduce other source of income activities like bee keeping and goat rearing to the famers.
- COVID-19 lockdown has affected activity implementation because of restrictions of public gatherings.
  - A maximum of 50 people were gathered at a time in different locations while observing social distance and hand washing facilities was provided to prevent the spread COVID-19. Additionally, the communities were sensitized on COVID-19 at the beginning of every intervention.

## AREAS OF IMPROVEMENT

- In case of future scale up of operations in refugee settlements, implementing partners like RICE West Nile should start the process of updating information on the Refugee Response Monitoring System as soon as possibilities of scale up in refugee response manifest to minimize delays in actual implementation.

## LESSONS LEARNT

- The onset of the rainy season that has seen most community members engaged in farming activities has a direct effect on community mobilization for meetings; either mid-morning or afternoon hours need to be explored as a convenient time for the community meetings.



*Promoting community health among fishing communities of Pakwach and Madi-Okolo districts*



*Promoting peaceful coexistence among the refugees and host communities of Palorinya Refugee Stellement in Obongi District*





*Training stakeholders on conflict sensitive response to promote peaceful coexistence*



*Training conflict affected children on how to make liquid soap to fight COVID-19*





# RICE WEST NILE

Striving for Self Reliance

*P.O Box 481 Arua – Uganda  
Plot 3B, Mvara-Oluko Rd, Arua Municipality, Arua City  
T: +256393238163 | M: +256773472234 | +256702857349  
E: [ricearua@yahoo.com](mailto:ricearua@yahoo.com) | [ricewn@gmail.com](mailto:ricewn@gmail.com) | [jambo@ricewestnile.org](mailto:jambo@ricewestnile.org)  
[www.ricewestnile.org](http://www.ricewestnile.org)*

